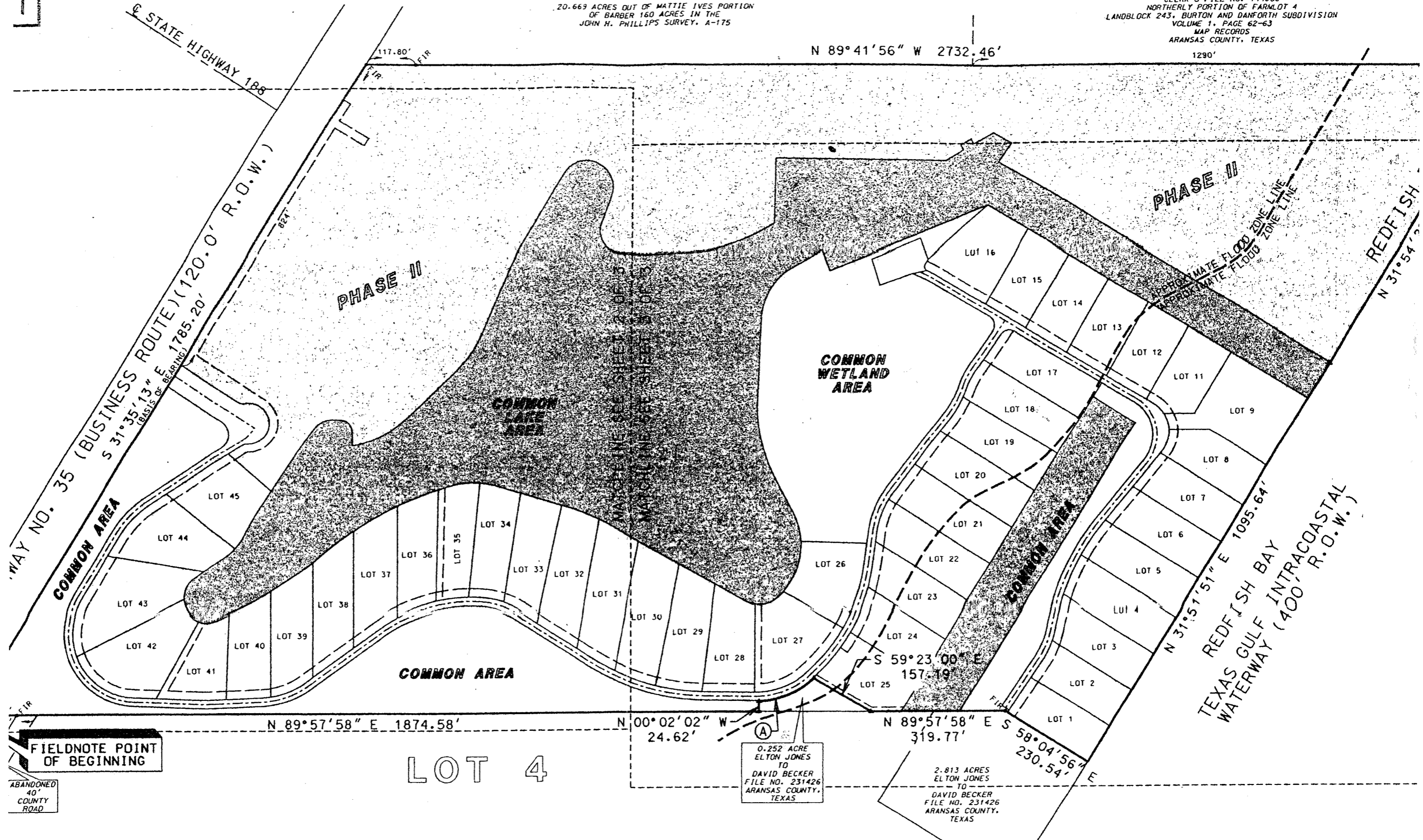


20.669 ACRES OUT OF MATTIE IVES PORTION  
OF BARBER 160 ACRES IN THE  
JOHN H. PHILLIPS SURVEY, A-175

33.756 ACRES  
BULLET CONCRETE MATERIAL'S  
CLERK'S FILE NO. 144666  
NORTHERLY PORTION OF FARMLOT 4  
LANDBLOCK 243, BURTON AND DANFORTH SUBDIVISION  
VOLUME 1, PAGE 62-63  
MAP RECORDS  
ARANSAS COUNTY, TEXAS  
1290'



FIELDNOTE POINT  
OF BEGINNING

ABANDONED  
40'  
COUNTY  
ROAD

LOT 4

0.252 ACRE  
ELTON JONES  
TO  
DAVID BECKER  
FILE NO. 231426  
ARANSAS COUNTY,  
TEXAS

2.813 ACRES  
ELTON JONES  
TO  
DAVID BECKER  
FILE NO. 231426  
ARANSAS COUNTY,  
TEXAS

LEGEND

△ = CALCULATED POINT

CURVE DATA

DELTA = 42°26'19"  
RADIUS = 195.00'